

# PROTECTION BEYOND FENCES



## SHIELD

Robotic Perimeter Security  
WITH COMPACT SURVEILLANCE RADAR







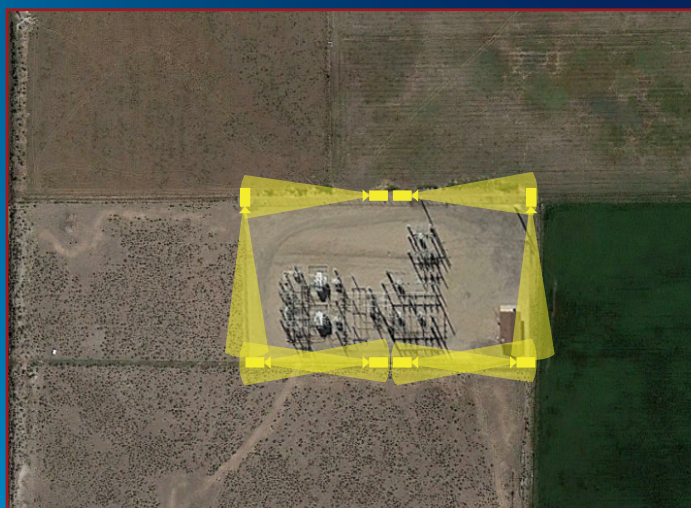
SHIELD PRODUCT FAMILY	SS-130	SS-350	SS-850	SS-MOBILE
DESIGNED FOR RADAR MODEL	C20	C40	C550	Varies
CAMERA MODEL	Samsung SCP-2370RH	Multiple options available	Multiple options available	Axis
NETWORKEDIO DEVICE	CC8B (inside of Shield enclosure)	CC8B (inside of Shield enclosure)	CC8B (inside of Shield enclosure)	HUB4B
MAXIMUM RANGE FOR A PERSON (NO LIGHT)	130 meters	350 meters	850 meters	Varies
MAXIMUM RANGE FOR A VEHICLE (NO LIGHT)	350 meters	500 meters	1,500 meters	Varies
COVERAGE AREA WITH SINGLE RADAR	4 acres	20 acres	140 acres	Varies
NOMINAL POWER REQUIREMENTS WITHOUT RADAR	29 Watts 120VAC/240VAC or 24 VDC	Varies based on camera	Varies based on camera	9-50 Watts 24 VDC
COMMUNICATION INTERFACE (WIRELESS OPTIONS)	5 passive PoE 1 optional active PoE	5 passive PoE 1 optional active PoE	5 passive PoE 1 optional active PoE	3 passive PoE 1 active PoE
OPERATIONAL TEMPERATURE RANGE	IP66 -30° C to 55° C	IP66 -30° C to 55° C	IP66 -30° C to 55° C	IP67 -20° C to 50° C

The SpotterRF Shield System is a robotic perimeter security system that features compact radar integrated with an EO/IR PTZ Camera. The two are integrated through NetworkedIO, a powerful integration platform that performs the slew-to-cue commands between the camera and the radars. Turnkey Shield systems are available to easily integrate into existing security systems as well as operate as stand alone.

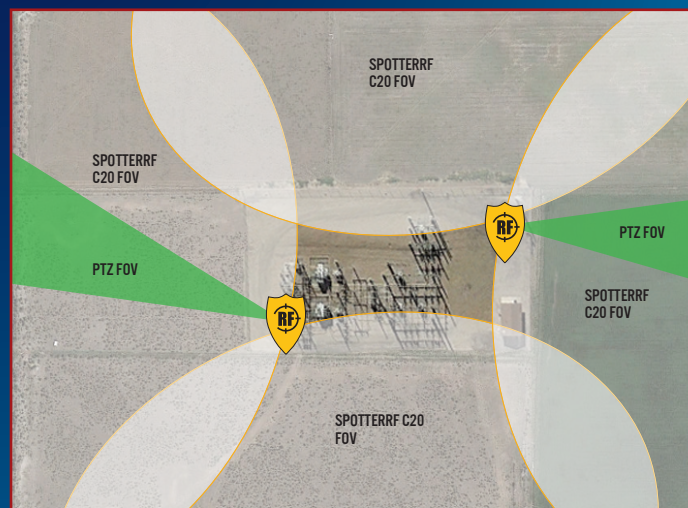
- Web user interface
- \*AC/DC surge protection
- \*Remote power cycle
- Turnkey COTS
- Pre-integrated, pre-tested

\*Excludes SS-Mobile

## COVERAGE WITH CAMERAS ONLY



## COVERAGE WITH SHIELD



FOR MORE INFORMATION, CONTACT:

[sales@spotterrf.com](mailto:sales@spotterrf.com) – 801-742-5849

[spotterrf.com](http://spotterrf.com)

